

■ **Walt Disney's Comics and Stories – Vol. 3 No. 11 (August 1943)**

Front Cover — Observations (IMG_1305)

Photo Condition & Quality

Clear, high-resolution full-cover image with even lighting and accurate color reproduction.



Scene & Composition

- Donald Duck stands in front of an open refrigerator labeled "PHREEZO."
- Three ducklings are inside the refrigerator shelves, reaching for and eating various foods including watermelon and oranges.
- Donald holds a yellow scoop or container, appearing surprised at the scene.
- Background features a red upper field and a black-and-white checkered kitchen floor.
- Masthead reads *Walt Disney's Comics and Stories* with issue text **August 1943 – Vol. 3 No. 11 – 10¢**.

Physical Condition Findings

- Heavy spine wear with paper loss and splitting along multiple inches.
- Pronounced horizontal creases near the bottom of the cover.
- Edge chipping and tears along the spine edge and lower margin.
- Corner rounding on all corners; lower-left most worn.
- Surface scuffing and soiling, especially in lighter background areas.

Color & Printing Quality

- Reds, blues, and yellows remain strong though dulled by age.
- Some fading and discoloration in lighter cream areas.
- Black outlines remain bold and well registered.

Paper & Structural Notes

- Moderate oxidation along edges.
- Cover remains attached but with very weak spine structure.

Overall Impression

A visually striking cover with significant spine deterioration and moderate overall surface wear.

Back Cover — Observations (IMG_1306)

Photo Condition & Quality

Clear image showing the full back cover with legible text and illustrations.



*Opportunity
Is Knocking!*
OPEN YOUR DOOR
to a
monthly meeting
of the
**WALT DISNEY
Fun Club**
with Mickey, Minnie,
Donald, and all the
other pranksters.

A YEAR'S SUBSCRIPTION (12 Issues)
to **WALT DISNEY'S** AND
COMICS STORIES

Costs only
\$1.00 postpaid
TWO YEARS
\$2.00 postpaid

CLEAN — INSTRUCTIVE — ENTERTAINING

Mail to: **K. K. PUBLICATIONS, Inc.**
DEPT. 8 POUGHKEEPSIE, NEW YORK

Gentlemen:
Enclosed find \$ _____ for which please enter the following subscription
to **Walt Disney's Comics and Stories** for _____ monthly issues beginning
with _____ issue.

Name _____
Street and Number _____
City or Town _____ State _____
Donor's Name _____
Address _____

WALDISNEY
W. HARRISBURG PA
6-44-REG-112 RC

Scene & Composition

- Subscription advertisement titled “**Opportunity Is Knocking!**”
- Donald Duck and two ducklings stand at a doorway, greeting Mickey Mouse dressed as a club representative.
- Text promotes a year’s subscription to *Walt Disney’s Comics and Stories*.
- Subscription coupon fills the lower portion.

Physical Condition Findings

- Heavy surface soiling and discoloration across the page.
- Substantial paper loss and tearing at lower-left corner.
- Edge wear along right and bottom margins.
- Multiple creases through text and artwork areas.

Color & Printing Quality

- Greens, reds, and yellows remain visible but muted.
- Ink density uneven in heavily worn sections.

Paper Condition

- Uniform tan oxidation.
- No moisture rippling observed.

Overall Impression

Heavily worn back cover with notable corner loss but intact printed content.

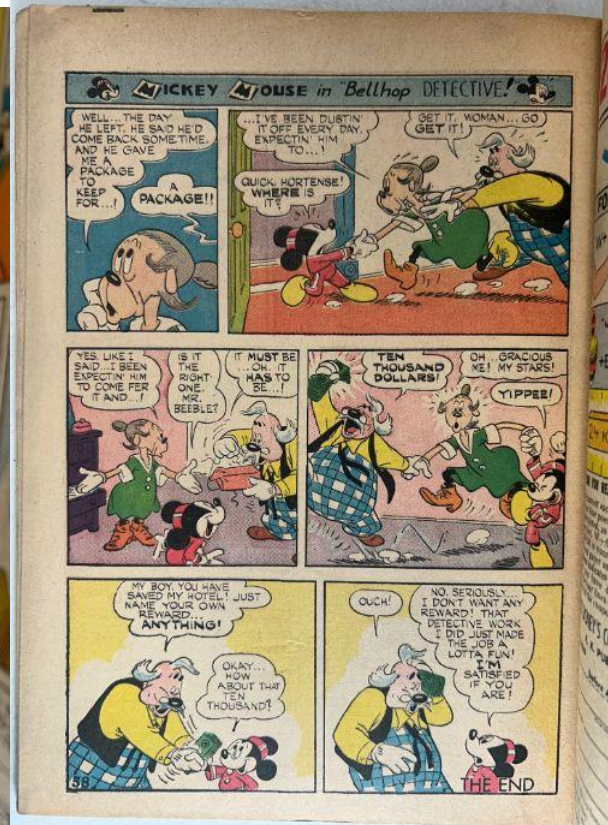
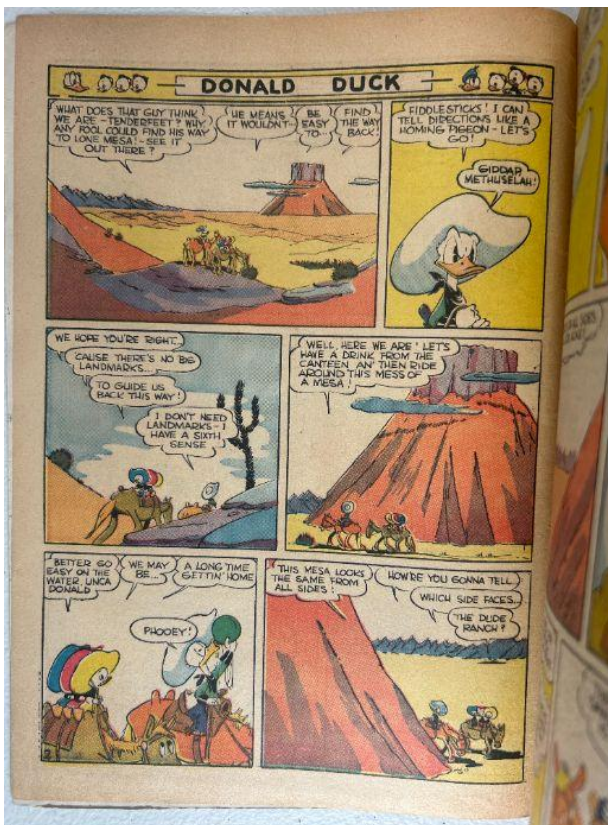
Interior Pages — Observations (IMG_1307–IMG_1310)

Photo Condition & Quality

Clear, evenly lit interior images showing full panels, margins, and gutters.

Page Color

tan to medium brown



Interior Pages Findings

Artwork & Story Content

- Mickey Mouse "Bellhop Detective" sequence with multiple pages of slapstick action.
- Additional Mickey Mouse hunting-themed story featuring Goofy.
- Donald Duck western-style adventure set in a desert mesa landscape.
- Prose feature and illustrated text pages including *Hollywood Chatter*.

All pages appear complete with no clipped panels or missing story sections.

Color & Printing Quality

- Primary colors remain visible though subdued by age.
- Pastels show noticeable fading.
- Halftone printing consistent with early-1940s Dell output.
- Linework remains crisp and readable.

Paper Condition

- Moderate oxidation and edge darkening.
- Margin foxing present.
- Small corner creases and edge nicks visible.
- Slight natural waviness; no moisture damage apparent.

Structural Notes

- Pages remain attached at staples.
- Lower staple stress visible through interior wraps.
- Paper remains flexible.

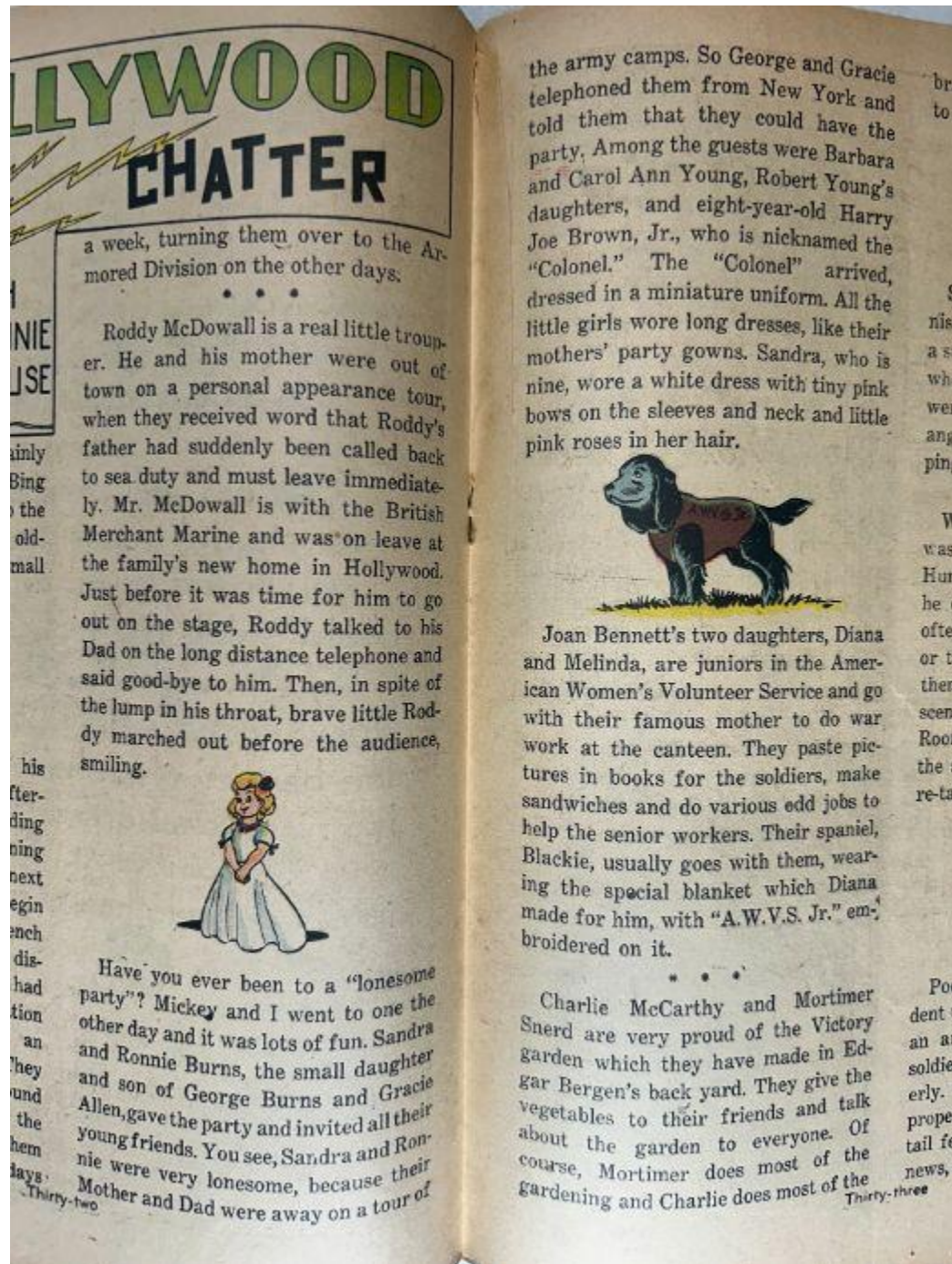
Overall Impression

Complete interior with solid readability and typical Golden Age wear.

Centerfold — Observations (IMG_1311)

Photo Condition & Quality

Clear two-page spread showing central gutter and staple locations.



Physical Findings

- Centerfold attached at both staples.
- Minor tearing near lower staple.
- Even tan toning with darker fold line.
- Light wrinkles present.

Overall Impression

Structurally intact centerfold with moderate staple-area wear.

Spine — Observations (IMG_1312)

Photo Condition & Quality

Clear angled view highlighting spine edge, curvature, and damage.



Structural Findings

- Extensive paper loss along the spine.
- Multiple splits and breaks exposing interior paper.
- Pronounced spine roll.
- Adhesive residue and fiber exposure around staple areas.

Surface Condition

- Heavy abrasion; gloss completely worn away.

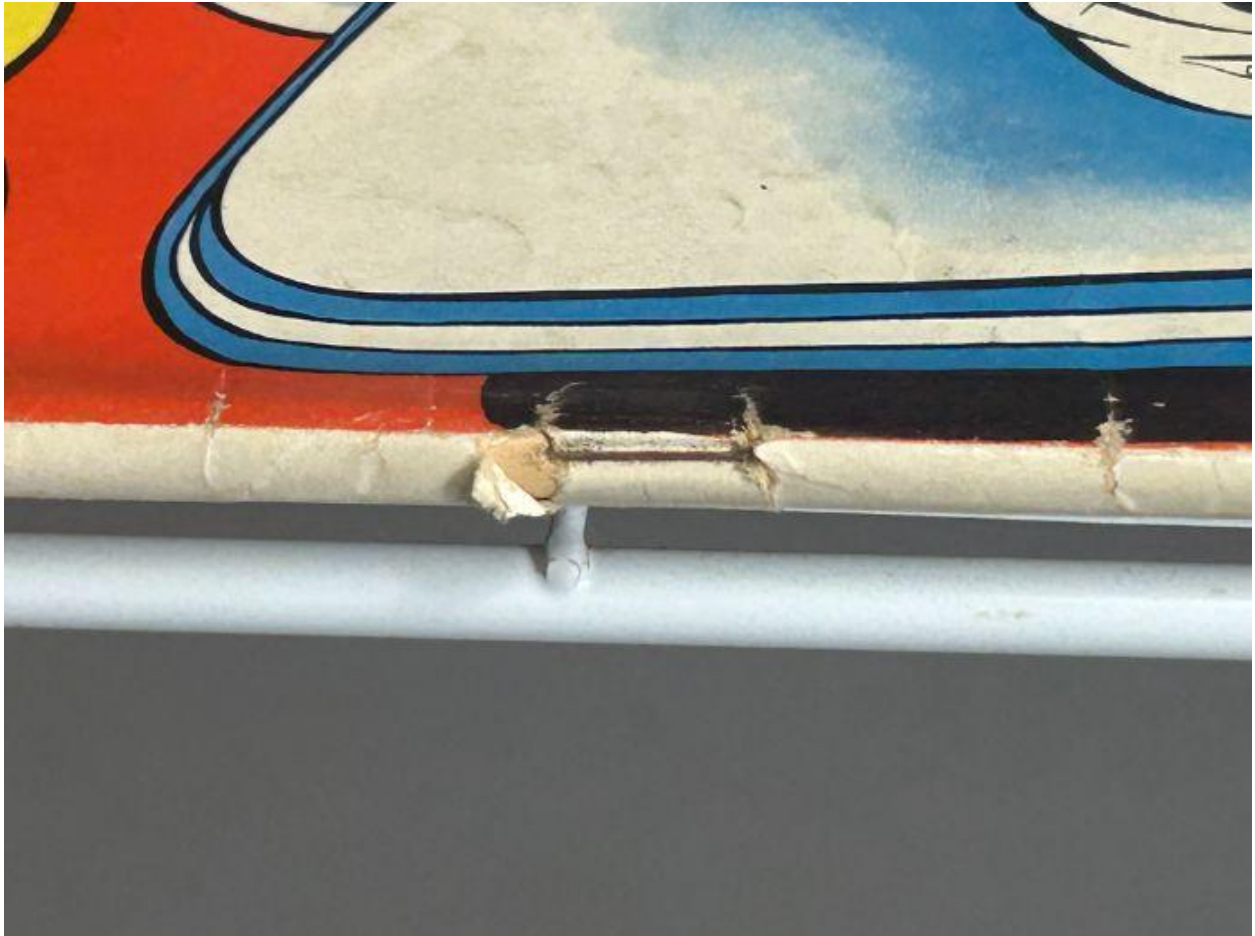
Overall Impression

Severely compromised spine with major structural damage.

Upper Staple — Observations (IMG_1313)

Photo Condition & Quality

Macro image clearly showing staple metal and surrounding fibers.



Staple Findings

- Large tear opening surrounding staple entry.
- Moderate oxidation on metal.
- Paper fibers heavily frayed and delaminated.
- Loss of printed layer adjacent to staple.

Overall Impression

Upper staple remains attached but offers minimal structural support.

Lower Staple — Observations (IMG_1314)

Photo Condition & Quality

Clear close-up view of lower staple cavity and surrounding paper damage.



Staple Findings

- Deep staple cavity with missing paper mass.
- Staple legs angled outward from stress.
- Rust staining transferred into paper.
- Severe multi-layer paper separation.

Overall Impression

Lower staple is critically deteriorated and structurally unsound.

Brittleness Test — Observations (IMG_1315)

Photo Condition & Quality

Clear macro image documenting page corner flex.



Findings

- Page bends smoothly without cracking.
- No chipping or flaking observed.
- Paper dry but still flexible.

Overall Impression

Paper is aged but not brittle.